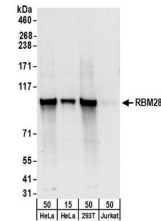


Product Datasheet

RBM28 Antibody (orb1523922)

Description	RBM28 Antibody
Species/Host	Rabbit
Reactivity	Human
Conjugation	Unconjugated
Tested Applications	WB
Immunogen	Between 709 and C-terminus
Target	RBM28
Preservatives	Tris-citrate/phosphate buffer, pH 7 to 8 containing 0.09% Sodium Azide
Form/Appearance	Whole IgG
Concentration	1000 µg/ml
Storage	2 - 8°C
Note	For research use only
Application notes	Format: Whole IgG
Clonality	Polyclonal
Uniprot ID	Q9NW13
NCBI	NP_060547.2
Dilution Range	WB - 1:2,000 - 1:10,000; IP - Not recommended
Expiration Date	12 months from date of receipt.



Detection of human RBM28 by western blot...