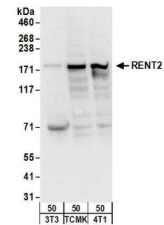


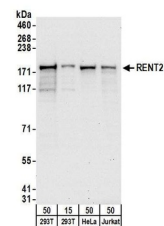
Product Datasheet

RENT2 Antibody (orb1523915)

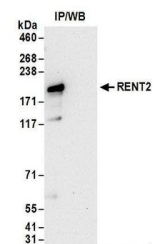
Description	RENT2 Antibody
Species/Host	Rabbit
Reactivity	Human, Mouse
Conjugation	Unconjugated
Tested Applications	IP, WB
Immunogen	Between 1 and 50
Target	RENT2
Preservatives	Tris-citrate/phosphate buffer, pH 7 to 8 containing 0.09% Sodium Azide
Form/Appearance	Whole IgG
Concentration	1000 µg/ml
Storage	2 - 8°C
Note	For research use only
Application notes	Format: Whole IgG
Clonality	Polyclonal
Uniprot ID	Q9HAU5
NCBI	NP_056357.1
Dilution Range	WB - 1:1,000 - 1:5,000; IP - 2 - 10 µg/mg lysate
Expiration Date	12 months from date of receipt.



Detection of mouse RENT2 by western blot...



Detection of human RENT2 by western blot...



Detection of human RENT2 by western blot...