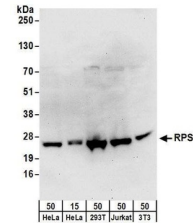


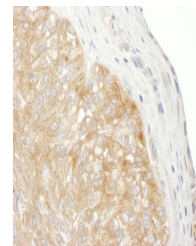
Product Datasheet

RPS9 Antibody (orb1523880)

Description	RPS9 Antibody
Species/Host	Rabbit
Reactivity	Human, Mouse
Conjugation	Unconjugated
Tested Applications	IHC, WB
Immunogen	Between 1 and 50
Target	RPS9
Preservatives	Tris-citrate/phosphate buffer, pH 7 to 8 containing 0.09% Sodium Azide
Form/Appearance	Whole IgG
Concentration	1000 µg/ml
Storage	2 - 8°C
Note	For research use only
Application notes	Format: Whole IgG
Clonality	Polyclonal
Uniprot ID	P46781
NCBI	NP_001004.2
Dilution Range	WB - 1:1,000 - 1:5,000; IP - Not recommended; IHC - 1:500 - 1:2,000. Epitope retrieval with citrate buffer pH 6.0 is recommended for FFPE tissue sections.
Expiration Date	12 months from date of receipt.



Detection of human and mouse RPS9 by wes...



Detection of human RPS9 by immunohistoch...