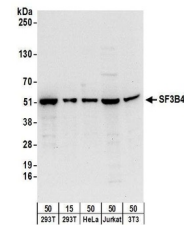


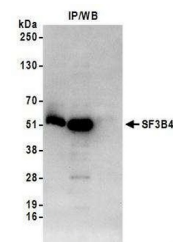
## Product Datasheet

### SF3B4 Antibody (orb1523874)

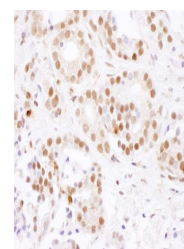
|                            |   |
|----------------------------|---|
| <b>Description</b>         | SF3B4 Antibody  |
| <b>Species/Host</b>        | Rabbit  |
| <b>Reactivity</b>          | Human, Mouse  |
| <b>Conjugation</b>         | Unconjugated  |
| <b>Tested Applications</b> | IHC, IP, WB   |
| <b>Immunogen</b>           | Between 374 and C-terminus  |
| <b>Target</b>              | SF3B4   |
| <b>Preservatives</b>       | Tris-citrate/phosphate buffer, pH 7 to 8 containing 0.09% Sodium Azide  |
| <b>Form/Appearance</b>     | Whole IgG   |
| <b>Concentration</b>       | 1000 µg/ml  |
| <b>Storage</b>             | 2 - 8°C   |
| <b>Note</b>                | For research use only   |
| <b>Application notes</b>   | Format: Whole IgG   |
| <b>Clonality</b>           | Polyclonal  |
| <b>Uniprot ID</b>          | <a href="#">Q15427</a>  |
| <b>NCBI</b>                | <a href="#">NP_005841.1</a>   |
| <b>Dilution Range</b>      | WB - 1:2,000 - 1:10,000; IP - 2 - 10 µg/mg lysate; IHC - 1:500 - 1:2,000. Epitope retrieval with citrate buffer pH 6.0 is recommended for FFPE tissue sections. |
| <b>Expiration Date</b>     | 12 months from date of receipt.   |



Detection of human and mouse SF3B4 by we...



Detection of human SF3B4 by western blot...



Detection of human SF3B4 by immunohistoc...