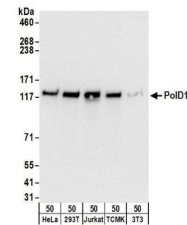


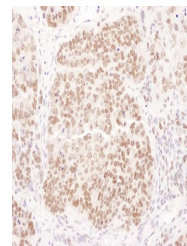
Product Datasheet

PoD1 Antibody (orb1523769)

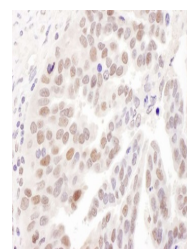
Description	PoD1 Antibody
Species/Host	Rabbit
Reactivity	Human, Mouse
Conjugation	Unconjugated
Tested Applications	IHC, WB
Immunogen	Between 75 and 125
Target	PoD1
Preservatives	Tris-citrate/phosphate buffer, pH 7 to 8 containing 0.09% Sodium Azide
Form/Appearance	Whole IgG
Concentration	1000 µg/ml
Storage	2 - 8°C
Note	For research use only
Application notes	Format: Whole IgG
Clonality	Polyclonal
Uniprot ID	P28340
NCBI	NP_002682.2
Dilution Range	WB - 1:2,000 - 1:10,000; IP - Not recommended; IHC - 1:1,000 - 1:5,000. Epitope retrieval with citrate buffer pH 6.0 is recommended for FFPE tissue sections.
Expiration Date	12 months from date of receipt.



Detection of human and mouse PoD1 by we...



Detection of mouse PoD1 by immunohistoc...



Detection of human PoD1 by immunohistoc...