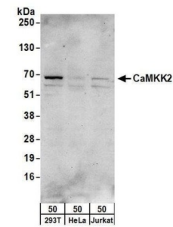


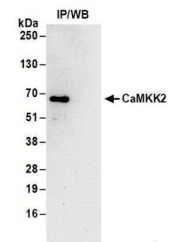
Product Datasheet

CaMKK2 Antibody (orb1523761)

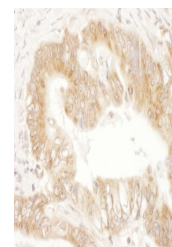
Description	CaMKK2 Antibody
Species/Host	Rabbit
Reactivity	Human
Conjugation	Unconjugated
Tested Applications	IHC, IP, WB
Immunogen	Between 538 and C-terminus
Target	CaMKK2
Preservatives	Tris-citrate/phosphate buffer, pH 7 to 8 containing 0.09% Sodium Azide
Form/Appearance	Whole IgG
Concentration	1000 µg/ml
Storage	2 - 8°C
Note	For research use only
Application notes	Format: Whole IgG
Clonality	Polyclonal
Uniprot ID	Q96RR4
NCBI	NP_006540.3
Dilution Range	WB - 1:500 - 1:2,500; IP - 2 - 10 µg/mg lysate; IHC - 1:500 - 1:2,000. Epitope retrieval with citrate buffer pH 6.0 is recommended for FFPE tissue sections.
Expiration Date	12 months from date of receipt.



Detection of human CaMKK2 by western blo...



Detection of human CaMKK2 by western blo...



Detection of human CaMKK2 by immunohisto...