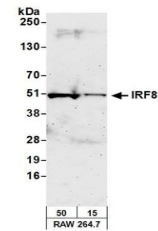


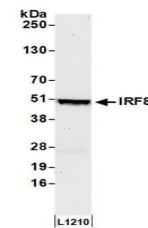
Product Datasheet

IRF8 Antibody (orb1523733)

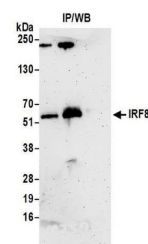
Description	IRF8 Antibody
Species/Host	Rabbit
Reactivity	Mouse
Conjugation	Unconjugated
Tested Applications	IP, WB
Immunogen	Between 374 and C-terminus
Target	IRF8
Preservatives	Tris-citrate/phosphate buffer, pH 7 to 8 containing 0.09% Sodium Azide
Form/Appearance	Whole IgG
Concentration	1000 µg/ml
Storage	2 - 8°C
Note	For research use only
Application notes	Format: Whole IgG
Clonality	Polyclonal
Uniprot ID	P23611
NCBI	NP_032346.1
Dilution Range	WB - 1:2,000 - 1:10,000; IP - 2 - 5 µg/mg lysate
Expiration Date	12 months from date of receipt.



Detection of mouse IRF8 by western blot....



Detection of mouse IRF8 by western blot....



Detection of human IRF8 by western blot ...