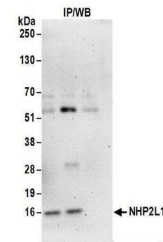


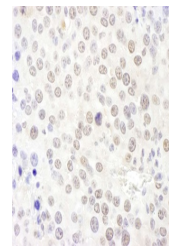
Product Datasheet

NHP2L1 Antibody (orb1523732)

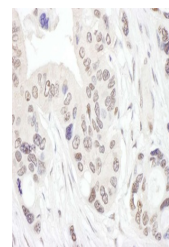
Description	NHP2L1 Antibody
Species/Host	Rabbit
Reactivity	Human, Mouse
Conjugation	Unconjugated
Tested Applications	IHC, IP
Immunogen	Between 78 and C-terminus
Target	NHP2L1
Preservatives	Tris-citrate/phosphate buffer, pH 7 to 8 containing 0.09% Sodium Azide
Form/Appearance	Whole IgG
Concentration	1000 µg/ml
Storage	2 - 8°C
Note	For research use only
Application notes	Format: Whole IgG
Clonality	Polyclonal
Uniprot ID	P55769
NCBI	NP_004999.1
Dilution Range	WB - Not recommended; IP - 2 - 10 µg/mg lysate; IHC - 1:1,000 - 1:5,000. Epitope retrieval with citrate buffer pH 6.0 is recommended for FFPE tissue sections.
Expiration Date	12 months from date of receipt.



Detection of human NHP2L1 by western blo...



Detection of mouse NHP2L1 by immunohisto...



Detection of human NHP2L1 by immunohisto...