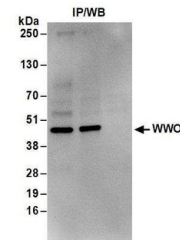


## Product Datasheet

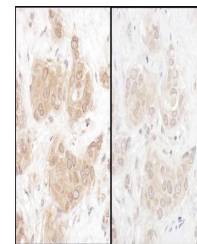
### WWOX Antibody (orb1523643)

<b>Description</b>	WWOX Antibody
<b>Species/Host</b>	Rabbit
<b>Reactivity</b>	Human, Mouse
<b>Conjugation</b>	Unconjugated
<b>Tested Applications</b>	IHC, IP
<b>Immunogen</b>	Between 75 and 125
<b>Target</b>	WWOX
<b>Preservatives</b>	Tris-citrate/phosphate buffer, pH 7 to 8 containing 0.09% Sodium Azide
<b>Form/Appearance</b>	Whole IgG
<b>Concentration</b>	1000 µg/ml
<b>Storage</b>	2 - 8°C
<b>Note</b>	For research use only
<b>Application notes</b>	Format: Whole IgG
<b>Clonality</b>	Polyclonal
<b>Uniprot ID</b>	<a href="#">Q9NZC7</a>
<b>NCBI</b>	<a href="#">P_057457.1</a>
<b>Dilution Range</b>	WB - Not recommended. A304-078A has not performed satisfactorily when used for WB of WWOX in crude preparations (e.g. whole cell lysate). This antibody can be used for WB of enriched (e.g. immunoprecipitated) sources of WWOX.; IP - 2 - 10 µg/mg lysate; IHC - 1:1,000 - 1:5,000. Epitope retrieval with citrate buffer pH 6.0 is recommended for FFPE tissue sections.
<b>Expiration Date</b>	12 months from date of receipt.

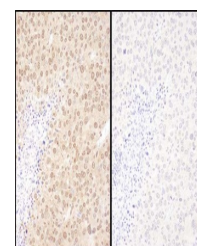


Detection of human WWOX by western blot

...



Detection of human WWOX by immunohistochem...



Detection of mouse WWOX by immunohistochem...