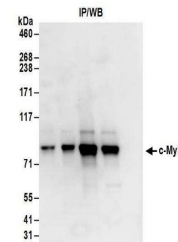


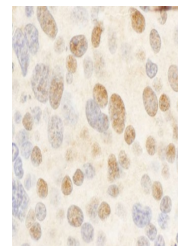
Product Datasheet

c-Myb Antibody (orb1523550)

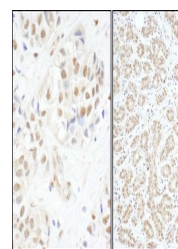
Description	c-Myb Antibody
Species/Host	Rabbit
Reactivity	Human, Mouse
Conjugation	Unconjugated
Tested Applications	IHC, IP
Immunogen	Between 1 and 50
Target	c-Myb
Preservatives	Tris-citrate/phosphate buffer, pH 7 to 8 containing 0.09% Sodium Azide
Form/Appearance	Whole IgG
Concentration	1000 µg/ml
Storage	2 - 8°C
Note	For research use only
Application notes	Format: Whole IgG
Clonality	Polyclonal
Uniprot ID	P10242
NCBI	NP_005366.2
Dilution Range	WB - Not recommended. Use rabbit anti-c-Myb antibody A304-138A.; IP - 2 - 10 µg/mg lysate; IHC - 1:1,000 - 1:5,000. Epitope retrieval with citrate buffer pH 6.0 is recommended for FFPE tissue sections.
Expiration Date	12 months from date of receipt.



Detection of human c-Myb by western blot...



Detection of mouse c-Myb by immunohistoc...



Detection of human c-Myb by immunohistoc...