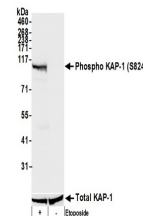


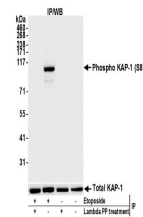
Product Datasheet

KAP-1, Phospho (S824) Antibody (orb1523532)

Description	KAP-1, Phospho (S824) Antibody
Species/Host	Rabbit
Reactivity	Mouse
Conjugation	Unconjugated
Tested Applications	IP, WB
Immunogen	Surrounding serine 824
Target	KAP-1, Phospho (S824)
Preservatives	Tris-citrate/phosphate buffer, pH 7 to 8 containing 0.09% Sodium Azide
Form/Appearance	Whole IgG
Concentration	1000 µg/ml
Storage	2 - 8°C
Note	For research use only
Application notes	Format: Whole IgG
Clonality	Polyclonal
Uniprot ID	Q62318
NCBI	NP_035718.2
Dilution Range	WB - 1:2,000 - 1:10,000; IP - 2 - 10 µg/mg lysate
Expiration Date	12 months from date of receipt.



Detection of mouse Phospho KAP-1 (S824) ...



Detection of mouse Phospho KAP-1 (S824) ...