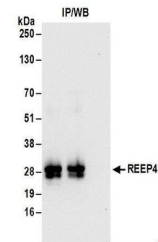


Product Datasheet

REEP4 Antibody (orb1523520)

Description	REEP4 Antibody
Species/Host	Rabbit
Reactivity	Human
Conjugation	Unconjugated
Tested Applications	IP
Immunogen	Between 207 and C-terminus
Target	REEP4
Preservatives	Tris-citrate/phosphate buffer, pH 7 to 8 containing 0.09% Sodium Azide
Form/Appearance	Whole IgG
Concentration	1000 µg/ml
Storage	2 - 8°C
Note	For research use only
Application notes	Format: Whole IgG
Clonality	Polyclonal
Uniprot ID	Q9H6H4
NCBI	NP_079508.2
Dilution Range	WB - Not recommended. orb1523520 has not performed satisfactorily when used for WB of REEP4 in crude preparations (e.g. whole cell lysate). This antibody can be used for WB of enriched (e.g. immunoprecipitated) sources of REEP4.; IP - 2 - 10 µg/mg lysate
Expiration Date	12 months from date of receipt.



Detection of human REEP4 by western blot...