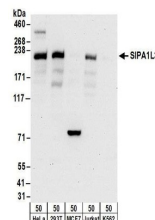


Product Datasheet

SIPA1L3 Antibody (orb1523517)

Description	SIPA1L3 Antibody
Species/Host	Rabbit
Reactivity	Human
Conjugation	Unconjugated
Tested Applications	WB
Immunogen	Between 1 and 50
Target	SIPA1L3
Preservatives	Tris-citrate/phosphate buffer, pH 7 to 8 containing 0.09% Sodium Azide
Form/Appearance	Whole IgG
Concentration	1000 µg/ml
Storage	2 - 8°C
Note	For research use only
Application notes	Format: Whole IgG
Clonality	Polyclonal
Uniprot ID	O60292
NCBI	NP_055888.1
Dilution Range	WB - 1:1,000 - 1:5,000; IP - Not recommended
Expiration Date	12 months from date of receipt.



Detection of human SIPA1L3 by western bl...