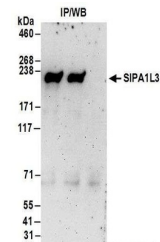


Product Datasheet

SIPA1L3 Antibody (orb1523515)

Description	SIPA1L3 Antibody
Species/Host	Rabbit
Reactivity	Human
Conjugation	Unconjugated
Tested Applications	IP
Immunogen	Between 1500 and 1550
Target	SIPA1L3
Preservatives	Tris-citrate/phosphate buffer, pH 7 to 8 containing 0.09% Sodium Azide
Form/Appearance	Whole IgG
Concentration	1000 µg/ml
Storage	2 - 8°C
Note	For research use only
Application notes	Format: Whole IgG
Clonality	Polyclonal
Uniprot ID	O60292
NCBI	NP_055888.1
Dilution Range	WB - Not recommended. Use rabbit anti-SIPA1L3 antibody A304-155A.; IP - 2 - 10 µg/mg lysate
Expiration Date	12 months from date of receipt.



Detection of human SIPA1L3 by western bl...