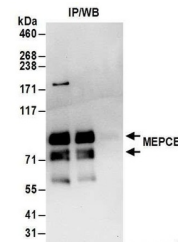


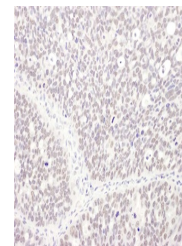
Product Datasheet

MEPCE Antibody (orb1523467)

Description	MEPCE Antibody
Species/Host	Rabbit
Reactivity	Human
Conjugation	Unconjugated
Tested Applications	IHC, IP
Immunogen	Between 639 and C-terminus
Target	MEPCE
Preservatives	Tris-citrate/phosphate buffer, pH 7 to 8 containing 0.09% Sodium Azide
Form/Appearance	Whole IgG
Concentration	1000 µg/ml
Storage	2 - 8°C
Note	For research use only
Application notes	Format: Whole IgG
Clonality	Polyclonal
Uniprot ID	Q7L2J0
NCBI	NP_062552.2
Dilution Range	WB - Not recommended. Use rabbit anti-MEPCE antibody A304-184A.; IP - 2 - 10 µg/mg lysate; IHC - 1:500 - 1:2,000. Epitope retrieval with citrate buffer pH 6.0 is recommended for FFPE tissue sections.
Expiration Date	12 months from date of receipt.



Detection of human MEPCE by western blot...



Detection of human MEPCE by immunohistoc...