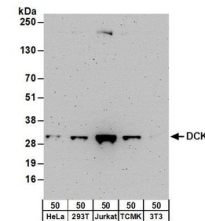


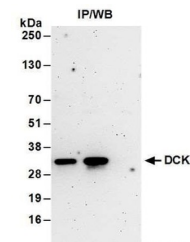
Product Datasheet

DCK Antibody (orb1523314)

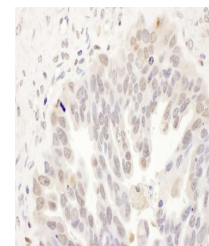
| | |
|----------------------------|---|
| Description | DCK Antibody |
| Species/Host | Rabbit |
| Reactivity | Human, Mouse |
| Conjugation | Unconjugated |
| Tested Applications | IHC, IP, WB |
| Immunogen | Between 210 and C-terminus |
| Target | DCK |
| Preservatives | Tris-citrate/phosphate buffer, pH 7 to 8 containing 0.09% Sodium Azide |
| Form/Appearance | Whole IgG |
| Concentration | 1000 µg/ml |
| Storage | 2 - 8°C |
| Note | For research use only |
| Application notes | Format: Whole IgG |
| Clonality | Polyclonal |
| Uniprot ID | P27707 |
| NCBI | NP_000779.1 |
| Dilution Range | WB - 1:2,000 - 1:10,000; IP - 2 - 10 µg/mg lysate; IHC - 1:1,000 - 1:5,000. Epitope retrieval with citrate buffer pH 6.0 is recommended for FFPE tissue sections. |
| Expiration Date | 12 months from date of receipt. |



Detection of human and mouse DCK by west...



Detection of human DCK by western blot o...



Detection of human DCK by immunohistoche...