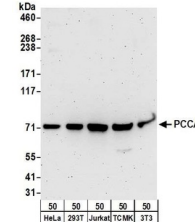


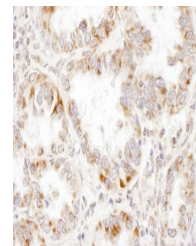
Product Datasheet

PCCA Antibody (orb1523206)

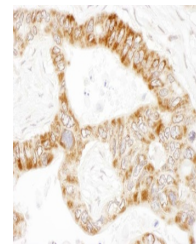
Description	PCCA Antibody
Species/Host	Rabbit
Reactivity	Human, Mouse
Conjugation	Unconjugated
Tested Applications	IHC, WB
Immunogen	Between 678 and C-terminus
Target	PCCA
Preservatives	Tris-citrate/phosphate buffer, pH 7 to 8 containing 0.09% Sodium Azide
Form/Appearance	Whole IgG
Concentration	1000 µg/ml
Storage	2 - 8°C
Note	For research use only
Application notes	Format: Whole IgG
Clonality	Polyclonal
Uniprot ID	P05165
NCBI	NP_000273.2
Dilution Range	WB - 1:2,000 - 1:10,000; IP - Not recommended; IHC - 1:500 - 1:2,000. Epitope retrieval with citrate buffer pH 6.0 is recommended for FFPE tissue sections.
Expiration Date	12 months from date of receipt.



Detection of human and mouse PCCA by wes...



Detection of human PCCA by immunohistoch...



Detection of human PCCA by immunohistoch...