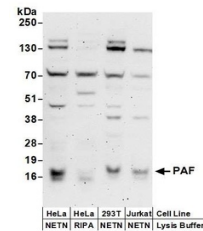


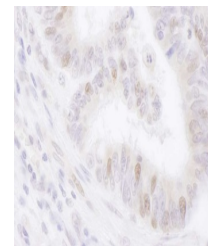
Product Datasheet

PAF Antibody (orb1523112)

Description	PAF Antibody
Species/Host	Rabbit
Reactivity	Human
Conjugation	Unconjugated
Tested Applications	IHC, WB
Immunogen	Between 61 and C-terminus
Target	PAF
Preservatives	Tris-citrate/phosphate buffer, pH 7 to 8 containing 0.09% Sodium Azide
Form/Appearance	Whole IgG
Concentration	1000 µg/ml
Storage	2 - 8°C
Note	For research use only
Application notes	Format: Whole IgG
Clonality	Polyclonal
Uniprot ID	Q15004
NCBI	NP_055551.1
Dilution Range	WB - 1:2,000 - 1:10,000; IP - Not recommended; IHC - 1:2,000 - 1:10,000. Epitope retrieval with citrate buffer pH 6.0 is recommended for FFPE tissue sections.
Expiration Date	12 months from date of receipt.



Detection of human PAF by western blot. ...



Detection of human PAF by immunohistoche...