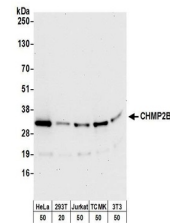


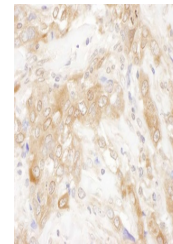
Product Datasheet

CHMP2B Antibody (orb1522885)

Description	CHMP2B Antibody
Species/Host	Rabbit
Reactivity	Human, Mouse
Conjugation	Unconjugated
Tested Applications	IHC, WB
Immunogen	Between 163 and C-terminus
Target	CHMP2B
Preservatives	Tris-citrate/phosphate buffer, pH 7 to 8 containing 0.09% Sodium Azide
Form/Appearance	Whole IgG
Concentration	1000 µg/ml
Storage	2 - 8°C
Note	For research use only
Application notes	Format: Whole IgG
Clonality	Polyclonal
Uniprot ID	Q9UQN3
NCBI	NP_054762.2
Dilution Range	WB - 1:1,000 - 1:5,000; IP - Not recommended; IHC - 1:500 - 1:2,000. Epitope retrieval with citrate buffer pH 6.0 is recommended for FFPE tissue sections.
Expiration Date	12 months from date of receipt.



Detection of human and mouse CHMP2B by W...



Detection of human CHMP2B by immunohisto...