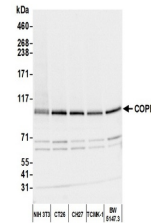


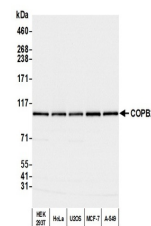
Product Datasheet

COPB2 Antibody (orb1522847)

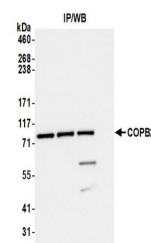
Description	COPB2 Antibody
Species/Host	Rabbit
Reactivity	Human, Mouse
Conjugation	Unconjugated
Tested Applications	IHC, IP, WB
Immunogen	Between 856 and C-terminus
Target	COPB2
Preservatives	Tris-citrate/phosphate buffer, pH 7 to 8 containing 0.09% Sodium Azide
Form/Appearance	Whole IgG
Concentration	1000 µg/ml
Storage	2 - 8°C
Note	For research use only
Application notes	Format: Whole IgG
Clonality	Polyclonal
Uniprot ID	P35606
NCBI	NP_004757.1
Dilution Range	WB - 1:10,000 - 1:25,000; IP - 2 - 10 µg/mg lysate; IHC - 1:1,000 to 1:5,000. Epitope retrieval with citrate buffer pH6.0 is recommended for FFPE tissue sections.
Expiration Date	12 months from date of receipt.



Detection of mouse COPB2 by western blot...



Detection of human COPB2 by western blot...



Detection of human COPB2 by western blot...