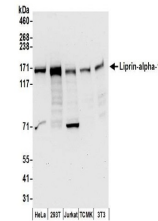


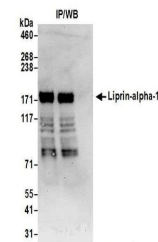
Product Datasheet

Liprin-alpha-1 Antibody (orb1522828)

| | |
|----------------------------|--|
| Description | Liprin-alpha-1 Antibody |
| Species/Host | Rabbit |
| Reactivity | Human, Mouse |
| Conjugation | Unconjugated |
| Tested Applications | IP, WB |
| Immunogen | Between 550 and 600 |
| Target | Liprin-alpha-1 |
| Preservatives | Tris-citrate/phosphate buffer, pH 7 to 8 containing 0.09% Sodium Azide |
| Form/Appearance | Whole IgG |
| Concentration | 1000 µg/ml |
| Storage | 2 - 8°C |
| Note | For research use only |
| Application notes | Format: Whole IgG |
| Clonality | Polyclonal |
| Uniprot ID | Q13136 |
| NCBI | NP_003617.1 |
| Dilution Range | WB - 1:2,000 - 1:10,000; IP - 2 - 10 µg/mg lysate |
| Expiration Date | 12 months from date of receipt. |



Detection of human and mouse Liprin-alpha-1



Detection of human Liprin-alpha-1 by immunoprecipitation and Western blotting