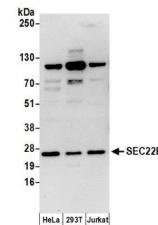


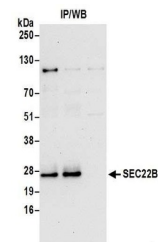
Product Datasheet

SEC22B Antibody (orb1522692)

Description	SEC22B Antibody
Species/Host	Rabbit
Reactivity	Human
Conjugation	Unconjugated
Tested Applications	IP, WB
Immunogen	Between 100 and 150
Target	SEC22B
Preservatives	Tris-citrate/phosphate buffer, pH 7 to 8 containing 0.09% Sodium Azide
Form/Appearance	Whole IgG
Concentration	1000 µg/ml
Storage	2 - 8°C
Note	For research use only
Application notes	Format: Whole IgG
Clonality	Polyclonal
Uniprot ID	O75396
NCBI	NP_004883.3
Dilution Range	WB - 1:500 - 1:2,500; IP - 2 - 10 µg/mg lysate
Expiration Date	12 months from date of receipt.



Detection of human SEC22B by western blo...



Detection of human SEC22B by western blo...