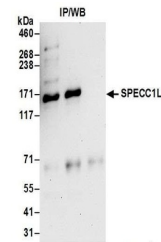


Product Datasheet

SPECC1L Antibody (orb1522658)

Description	SPECC1L Antibody
Species/Host	Rabbit
Reactivity	Human
Conjugation	Unconjugated
Tested Applications	IP
Immunogen	Between 1 and 50
Target	SPECC1L
Preservatives	Tris-citrate/phosphate buffer, pH 7 to 8 containing 0.09% Sodium Azide
Form/Appearance	Whole IgG
Concentration	1000 µg/ml
Storage	2 - 8°C
Note	For research use only
Application notes	Format: Whole IgG
Clonality	Polyclonal
Uniprot ID	Q69YQ0
NCBI	XP_005261463.1
Dilution Range	WB - Not recommended. A304-618A has not performed satisfactorily when used for WB of SPECC1L in crude preparations (e.g. whole cell lysate). This antibody can be used for WB of enriched (e.g. immunoprecipitated) sources of SPECC1L.; IP - 2 - 10 µg/mg lysate
Expiration Date	12 months from date of receipt.



Detection of human SPECC1L by western bl...