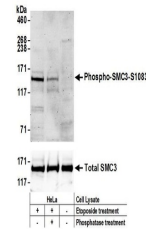


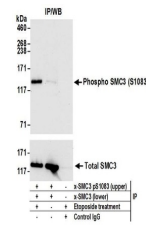
Product Datasheet

SMC3, Phospho (S1083) Antibody (orb1522621)

Description	SMC3, Phospho (S1083) Antibody
Species/Host	Rabbit
Reactivity	Human
Conjugation	Unconjugated
Tested Applications	IP, WB
Immunogen	Surrounding serine 1083
Target	SMC3, Phospho (S1083)
Preservatives	Tris-citrate/phosphate buffer, pH 7 to 8 containing 0.09% Sodium Azide
Form/Appearance	Whole IgG
Concentration	1000 µg/ml
Storage	2 - 8°C
Note	For research use only
Application notes	Format: Whole IgG
Clonality	Polyclonal
Uniprot ID	Q9UQE7
NCBI	NP_005436.1
Dilution Range	WB - 1:500 - 1:2,500; IP - 2 - 10 µg/mg lysate
Expiration Date	12 months from date of receipt.



Detection of human Phospho SMC3 (S1083) ...



Detection of human Phospho SMC3 (S1083) ...