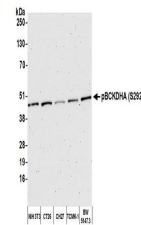


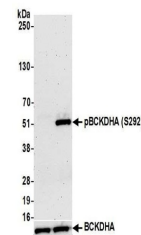
Product Datasheet

BCKDHA, Phospho (S292) Antibody (orb1522551)

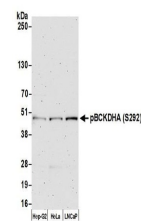
| | |
|----------------------------|---|
| Description | BCKDHA, Phospho (S292) Antibody |
| Species/Host | Rabbit |
| Reactivity | Human, Mouse |
| Conjugation | Unconjugated |
| Tested Applications | WB |
| Immunogen | Surrounding serine 292 |
| Target | BCKDHA, Phospho (S292) |
| Preservatives | Phosphate Buffered Saline (PBS) containing 0.09% Sodium Azide |
| Form/Appearance | Whole IgG |
| Concentration | 1000 µg/ml |
| Storage | 2 - 8°C |
| Note | For research use only |
| Application notes | Format: Whole IgG |
| Clonality | Polyclonal |
| Uniprot ID | P12694 |
| NCBI | NP_000700.1 |
| Dilution Range | WB - 1:10,000 - 1:25,000; IP - Not recommended |
| Expiration Date | 12 months from date of receipt. |



Detection of mouse pBCKDHA (S292) by wes...



Detection of human pBCKDHA (S292) by wes...



Detection of human pBCKDHA (S292) by wes...