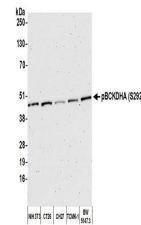


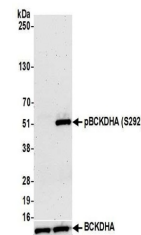
Product Datasheet

BCKDHA, Phospho (S292) Antibody (orb1522550)

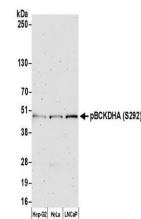
Description	BCKDHA, Phospho (S292) Antibody
Species/Host	Rabbit
Reactivity	Human, Mouse
Conjugation	Unconjugated
Tested Applications	WB
Immunogen	Surrounding serine 292
Target	BCKDHA, Phospho (S292)
Preservatives	Phosphate Buffered Saline (PBS) containing 0.09% Sodium Azide
Form/Appearance	Whole IgG
Concentration	1000 µg/ml
Storage	2 - 8°C
Note	For research use only
Application notes	Format: Whole IgG
Clonality	Polyclonal
Uniprot ID	P12694
NCBI	NP_000700.1
Dilution Range	WB - 1:10,000 - 1:25,000
Expiration Date	12 months from date of receipt.



Detection of mouse pBCKDHA (S292) by wes...



Detection of human pBCKDHA (S292) by wes...



Detection of human pBCKDHA (S292) by wes...