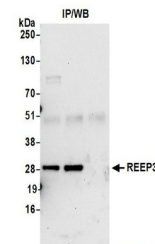


Product Datasheet

REEP3 Antibody (orb1520667)

Description	REEP3 Antibody
Species/Host	Rabbit
Reactivity	Human
Conjugation	Unconjugated
Tested Applications	IP
Immunogen	Between 205 and C-terminus
Target	REEP3
Preservatives	Tris-citrate/phosphate buffer, pH 7 to 8 containing 0.09% Sodium Azide
Form/Appearance	Whole IgG
Concentration	1000 µg/ml
Storage	2 - 8°C
Note	For research use only
Application notes	Format: Whole IgG
Clonality	Polyclonal
Uniprot ID	Q6NUK4
NCBI	Q6NUK4.1
Dilution Range	IP - 8 - 15 µl/mg lysate
Expiration Date	12 months from date of receipt.



Detection of human REEP3 by western blot...