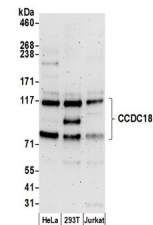


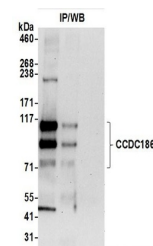
Product Datasheet

CCDC186 Antibody (orb1520548)

Description	CCDC186 Antibody
Species/Host	Rabbit
Reactivity	Human
Conjugation	Unconjugated
Tested Applications	IP, WB
Immunogen	Between 625 and 675
Target	CCDC186
Preservatives	Tris-citrate/phosphate buffer, pH 7 to 8 containing 0.09% Sodium Azide
Form/Appearance	Whole IgG
Concentration	1000 µg/ml
Storage	2 - 8°C
Note	For research use only
Application notes	Format: Whole IgG
Clonality	Polyclonal
Uniprot ID	Q7Z3E2
NCBI	Q7Z3E2.2
Dilution Range	WB - 1:10,000 - 1:25,000; IP - 50 µl/mg lysate
Expiration Date	12 months from date of receipt.



Detection of human CCDC186 by western blotting.



Detection of human CCDC186 by immunoprecipitation and western blotting.