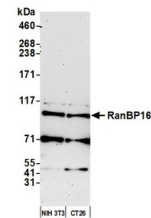


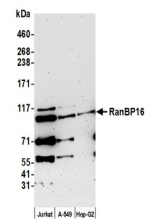
Product Datasheet

RanBP16 Antibody (orb1520406)

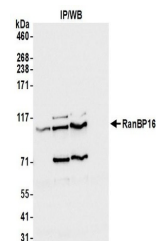
Description	RanBP16 Antibody
Species/Host	Rabbit
Reactivity	Human, Mouse
Conjugation	Unconjugated
Tested Applications	IP, WB
Immunogen	Between 1 and 50
Target	RanBP16
Preservatives	Tris-citrate/phosphate buffer, pH 7 to 8 containing 0.09% Sodium Azide
Form/Appearance	Whole IgG
Concentration	1000 µg/ml
Storage	2 - 8°C
Note	For research use only
Application notes	Format: Whole IgG
Clonality	Polyclonal
Uniprot ID	Q9UIA9
NCBI	Q9UIA9.3
Dilution Range	WB - 1:10,000 - 1:25,000; IP - 50-100 µl/mg lysate
Expiration Date	12 months from date of receipt.



Detection of human RanBP16 by western bl...



Detection of human RanBP16 by western bl...



Detection of human RanBP16 by western bl...