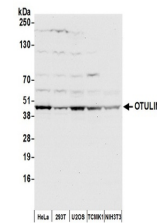


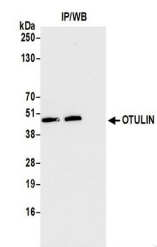
Product Datasheet

OTULIN Antibody (orb1520374)

Description	OTULIN Antibody
Species/Host	Rabbit
Reactivity	Human, Mouse
Conjugation	Unconjugated
Tested Applications	IP, WB
Immunogen	Between 75 and 125
Target	OTULIN
Preservatives	Tris-citrate/phosphate buffer, pH 7 to 8 containing 0.09% Sodium Azide
Form/Appearance	Whole IgG
Concentration	1000 µg/ml
Storage	2 - 8°C
Note	For research use only
Application notes	Format: Whole IgG
Clonality	Polyclonal
Uniprot ID	Q96BN8
NCBI	Q96BN8.3
Dilution Range	WB - 1:2,000 - 1:10,000; IP - 20-40 µl/mg lysate
Expiration Date	12 months from date of receipt.



Detection of human and mouse OTULIN by western blotting.



Detection of human OTULIN by western blotting.