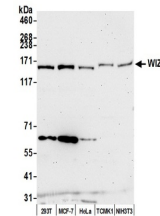


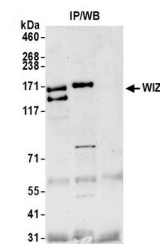
Product Datasheet

WIZ Antibody (orb1520291)

Description	WIZ Antibody
Species/Host	Rabbit
Reactivity	Human, Mouse
Conjugation	Unconjugated
Tested Applications	WB
Immunogen	Between 1601 and C-terminus
Target	WIZ
Preservatives	Tris-citrate/phosphate buffer, pH 7 to 8 containing 0.09% Sodium Azide
Form/Appearance	Whole IgG
Concentration	1000 µg/ml
Storage	2 - 8°C
Note	For research use only
Application notes	Format: Whole IgG
Clonality	Polyclonal
Uniprot ID	O95785
NCBI	O95785.2
Dilution Range	WB - 1:2,000 - 1:10,000; IP - 20-40 µl/mg lysate
Expiration Date	12 months from date of receipt.



Detection of human and mouse WIZ by west...



Detection of human WIZ by western blot o...