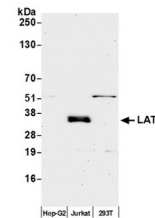


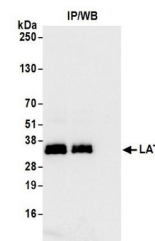
Product Datasheet

LAT Antibody (orb1520233)

| | |
|----------------------------|--|
| Description | LAT Antibody |
| Species/Host | Rabbit |
| Reactivity | Human |
| Conjugation | Unconjugated |
| Tested Applications | IP, WB |
| Immunogen | Between 212 and C-terminus |
| Target | LAT |
| Preservatives | Tris-citrate/phosphate buffer, pH 7 to 8 containing 0.09% Sodium Azide |
| Form/Appearance | Whole IgG |
| Concentration | 1000 µg/ml |
| Storage | 2 - 8°C |
| Note | For research use only |
| Application notes | Format: Whole IgG |
| Clonality | Polyclonal |
| Uniprot ID | O43561 |
| NCBI | O43561.1 |
| Dilution Range | WB - 1:10,000 - 1:25,000; IP - 50-100 µl/mg lysate |
| Expiration Date | 12 months from date of receipt. |



Detection of human LAT by western blot. ...



Detection of human LAT by western blot o...