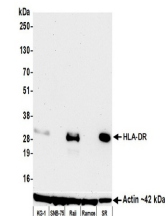


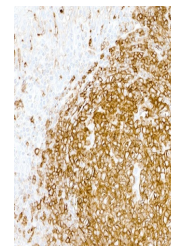
Product Datasheet

HLA-DR Antibody (orb1520114)

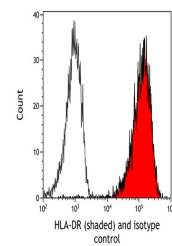
Description	HLA-DR Antibody
Species/Host	Mouse
Reactivity	Human
Conjugation	Unconjugated
Tested Applications	FC, ICC, IHC, WB
Immunogen	Activated human peripheral blood mononuclear cells
Target	HLA-DR
Preservatives	Phosphate Buffered Saline (PBS) pH 8.2 with 0.1% rAlbumin and 0.09% Sodium Azide
Form/Appearance	Whole IgG
Concentration	50 µg/ml
Storage	2 - 8°C
Note	For research use only
Application notes	Format: Whole IgG
Clonality	Monoclonal
Uniprot ID	P01903
NCBI	NP_061984.2
Dilution Range	WB - 1:1000; IHC - 1:100 - 1:500. Epitope retrieval with citrate buffer pH 6.0 is recommended for FFPE tissue sections.; ICC - 1:100 - 1:500. Epitope retrieval with citrate buffer pH 6.0 is recommended for FFPE cell sections.; IHC-IF - 1:100 to 1:500. Epitope retrieval with citrate buffer pH6.0 is recommended for FFPE cell sections.
Expiration Date	12 months from date of receipt.



Detection of human HLA-DR by western blo...



Detection of human HLA-DR by immunohisto...



Detection of human HLA-DR (shaded) in Da...