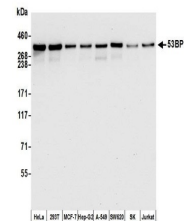


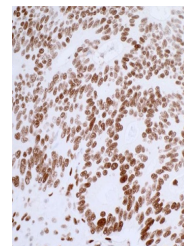
Product Datasheet

53BP1 Antibody (orb1519976)

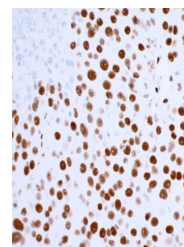
| | |
|----------------------------|---|
| Description | 53BP1 Antibody |
| Species/Host | Rabbit |
| Reactivity | Human, Mouse |
| Conjugation | Unconjugated |
| Tested Applications | FC, IHC, IP, WB |
| Immunogen | Between 350 and 400 |
| Target | 53BP1 |
| Preservatives | Borate Buffered Saline (BBS) pH 8.2 with 0.1% rAlbumin and 0.09% Sodium Azide |
| Form/Appearance | Whole IgG |
| Concentration | 100 µg/ml |
| Storage | 2 - 8°C |
| Note | For research use only |
| Application notes | Format: Whole IgG |
| Clonality | Recombinant |
| Uniprot ID | Q12888 |
| NCBI | NP_005648.1 |
| Dilution Range | WB - 1:1000; IP - 20 µl/mg lysate; IHC - 1:100 to 1:500. Epitope retrieval with citrate buffer pH6.0 is recommended for FFPE tissue sections. |
| Expiration Date | 12 months from date of receipt. |



Detection of human 53BP1 by western blot...



Detection of human 53BP1 by immunohistoc...



Detection of mouse 53BP1 by immunohistoc...