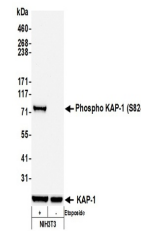


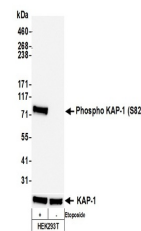
Product Datasheet

KAP-1, Phospho (S824) Antibody (orb1519972)

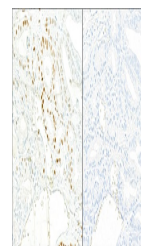
Description	KAP-1, Phospho (S824) Antibody
Species/Host	Rabbit
Reactivity	Human, Mouse
Conjugation	Unconjugated
Tested Applications	FC, ICC, IHC, IP, SW-Size, WB
Immunogen	Surrounding serine 824
Target	KAP-1, Phospho (S824)
Preservatives	Borate Buffered Saline (BBS) pH 8.2 with 0.1% rAlbumin and 0.09% Sodium Azide
Form/Appearance	Whole IgG
Concentration	100 µg/ml
Storage	2 - 8°C
Note	For research use only
Application notes	Format: Whole IgG
Clonality	Recombinant
Uniprot ID	Q13263
NCBI	NP_005753.1
Dilution Range	WB - 1:1000; IP - 20 µl/mg lysate; IHC - 1:100 - 1:500. Epitope retrieval with citrate buffer pH 6.0 is recommended for FFPE tissue sections.; ICC-IF - 1:100 - 1:500. Formaldehyde fixation is recommended. Permeabilization with Triton-X 100 is recommended for formaldehyde-fixed cells.
Expiration Date	12 months from date of receipt.



Detection of mouse Phospho KAP-1 (S824) ...



Detection of human Phospho KAP-1 (S824) ...



Detection of human Phospho KAP-1 (S824) ...