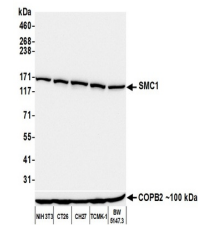


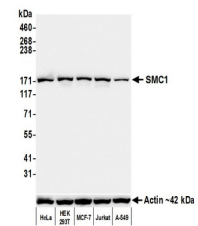
## Product Datasheet

### SMC1 Antibody (orb1519956)

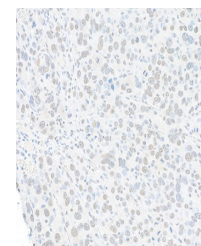
<b>Description</b>	SMC1 Antibody
<b>Species/Host</b>	Rabbit
<b>Reactivity</b>	Human, Mouse
<b>Conjugation</b>	Unconjugated
<b>Tested Applications</b>	FC, ICC, IHC, IP, WB
<b>Immunogen</b>	Between 1183 and C-terminus
<b>Target</b>	SMC1
<b>Preservatives</b>	Borate Buffered Saline (BBS) pH 8.2 with 0.1% rAlbumin and 0.09% Sodium Azide
<b>Form/Appearance</b>	Whole IgG
<b>Concentration</b>	50 µg/ml
<b>Storage</b>	2 - 8°C
<b>Note</b>	For research use only
<b>Application notes</b>	Format: Whole IgG
<b>Clonality</b>	Recombinant
<b>Uniprot ID</b>	<a href="#">Q14683</a>
<b>NCBI</b>	<a href="#">NP_006297.2</a>
<b>Dilution Range</b>	WB - 1:1000; IP - 20 µl/mg lysate; IHC - 1:100 - 1:500. Epitope retrieval with citrate buffer pH 6.0 is recommended for FFPE tissue sections.; ICC - 1:100 - 1:500. Epitope retrieval with citrate buffer pH6.0 is recommended for FFPE cell sections.; IHC-IF - 1:100 - 1:500. Epitope retrieval with citrate buffer pH 6.0 is recommended for FFPE tissue sections.
<b>Expiration Date</b>	12 months from date of receipt.



Detection of mouse SMC1 by western blot...



Detection of human SMC1 by western blot...



Detection of mouse SMC1 by immunohistochem...