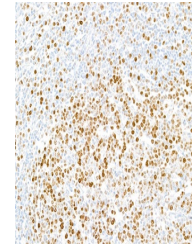


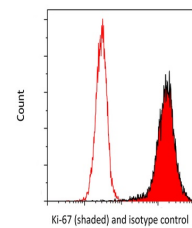
Product Datasheet

Ki-67 Antibody (orb1519947)

Description	Ki-67 Antibody
Species/Host	Rabbit
Reactivity	Human
Conjugation	Unconjugated
Tested Applications	FC, ICC, IF, IHC
Immunogen	Between 1200 and 1250
Target	Ki-67
Preservatives	Borate Buffered Saline (BBS) pH 8.2 with 0.1% rAlbumin and 0.09% Sodium Azide
Form/Appearance	Whole IgG
Concentration	50 µg/ml
Storage	2 - 8°C
Note	For research use only
Application notes	Format: Whole IgG
Clonality	Recombinant
Uniprot ID	P46013
NCBI	NP_002408.3
Dilution Range	IHC - 1:100 to 1:500. Epitope retrieval with citrate buffer pH 6.0 is recommended for FFPE tissue sections.; ICC - 1:100 to 1:500. Epitope retrieval with citrate buffer pH 6.0 is recommended for FFPE cell sections.; IHC-IF - 1:100 to 1:500. Epitope retrieval with citrate buffer pH6.0 is recommended for FFPE tissue sections.; ICC-IF - 1:100 - 1:500
Expiration Date	12 months from date of receipt.



Detection of human Ki-67 by immunohistoc...



Detection of human Ki-67 (shaded) in MOL...



Detection of human Ki-67 by immunocytoch...