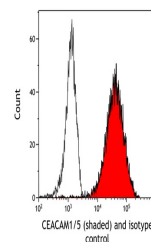


## Product Datasheet

### CEACAM1/5 Antibody (orb1519921)

|                            |   |
|----------------------------|---|
| <b>Description</b>         | CEACAM1/5 Antibody  |
| <b>Species/Host</b>        | Rabbit  |
| <b>Reactivity</b>          | Human   |
| <b>Conjugation</b>         | Unconjugated  |
| <b>Tested Applications</b> | FC, ICC, IHC, IP, WB  |
| <b>Immunogen</b>           | Residues 35-433 (ECD)   |
| <b>Target</b>              | CEACAM1/5   |
| <b>Preservatives</b>       | Borate Buffered Saline (BBS) pH 8.2 with 0.1% rAlbumin and 0.09% Sodium Azide   |
| <b>Form/Appearance</b>     | Whole IgG   |
| <b>Concentration</b>       | 50 µg/ml  |
| <b>Storage</b>             | 2 - 8°C   |
| <b>Note</b>                | For research use only   |
| <b>Application notes</b>   | Format: Whole IgG   |
| <b>Clonality</b>           | Recombinant   |
| <b>Uniprot ID</b>          | <b>P13688, P06731</b>   |
| <b>NCBI</b>                | <b>NP_001020083.1</b>   |
| <b>Dilution Range</b>      | WB - 1:1000; IP - 20 µl/1 mg lysate; IHC - 1:100 to 1:500. Epitope retrieval with citrate buffer pH6.0 is recommended for FFPE tissue sections.; ICC - 1:100 to 1:500. Epitope retrieval with citrate buffer pH6.0 is recommended for FFPE cell sections. |
| <b>Expiration Date</b>     | 12 months from date of receipt.   |



Detection of human CEACAM1/5 (shaded) in...