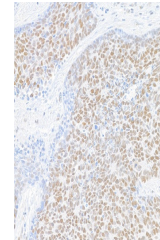


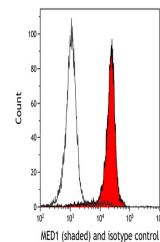
Product Datasheet

MED1 Antibody (orb1519906)

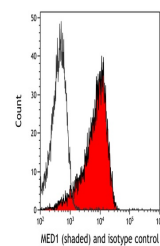
Description	MED1 Antibody
Species/Host	Rabbit
Reactivity	Human, Mouse
Conjugation	Unconjugated
Tested Applications	FC, ICC, IHC, IP, WB
Immunogen	Between 1531 and C-terminus
Target	MED1
Preservatives	Borate Buffered Saline (BBS) pH 8.2 with 0.1% rAlbumin and 0.09% Sodium Azide
Form/Appearance	Whole IgG
Concentration	100 µg/ml
Storage	2 - 8°C
Note	For research use only
Application notes	Format: Whole IgG
Clonality	Recombinant
Uniprot ID	Q15648
NCBI	NP_004765.2
Dilution Range	WB - 1:1000; IP - 20 µl/1 mg lysate; IHC - 1:100 to 1:500. Epitope retrieval with citrate buffer pH6.0 is recommended for FFPE tissue sections.; ICC - 1:100 to 1:500. Epitope retrieval with citrate buffer pH6.0 is recommended for FFPE tissue sections.
Expiration Date	12 months from date of receipt.



Detection of human MED1 in FFPE lung carcinoma tissue.



Detection of human MED1 (shaded) in HeLa cells.



Detection of mouse MED1 (shaded) in mIMC cells.