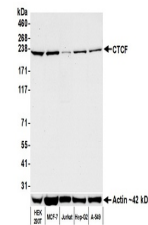


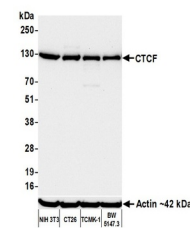
Product Datasheet

CTCF Antibody (orb1519894)

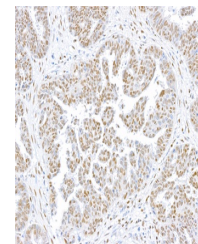
Description	CTCF Antibody
Species/Host	Rabbit
Reactivity	Human, Mouse
Conjugation	Unconjugated
Tested Applications	FC, ICC, IHC, IP, SW-Size, WB
Immunogen	Between 677 and C-terminus
Target	CTCF
Preservatives	Borate Buffered Saline (BBS) pH 8.2 with 0.1% rAlbumin and 0.09% Sodium Azide
Form/Appearance	Whole IgG
Concentration	100 µg/ml
Storage	2 - 8°C
Note	For research use only
Application notes	Format: Whole IgG
Clonality	Recombinant
Uniprot ID	P49711
NCBI	NP_006556.1
Dilution Range	WB - 1:1000; IP - 20 ul/1mg lysate; IHC - 1:100 to 1:500. Epitope retrieval with citrate buffer pH6.0 is recommended for FFPE tissue sections.; ICC - 1:100 to 1:500. Epitope retrieval with citrate buffer pH6.0 is recommended for FFPE cell sections.
Expiration Date	12 months from date of receipt.



Detection of human CTCF by western blot....



Detection of mouse CTCF by western blot....



Detection of human CTCF by immunohistoch...