

Product Datasheet

Rabbit anti-CD8 alpha Recombinant Monoclonal Antibody (orb1519887)

Description	CD8 alpha Antibody
Species/Host	Rabbit
Reactivity	Human
Conjugation	Unconjugated
Tested Applications	FC, IF, IHC, WB
Immunogen	Between 185 and C-terminus
Target	CD8 alpha
Preservatives	Borate Buffered Saline (BBS) pH 8.2 with 0.1% rAlbumin and 0.09% Sodium Azide
Form/Appearance	Whole IgG
Concentration	250 µg/ml
Storage	2 - 8°C
Note	For research use only
Application notes	Format: Whole IgG
Clonality	Recombinant
Clone Number	BLR044F
Antibody Type	Primary Antibody
Purity	Recombinant antibody was purified from cell culture supernatant

Biorbyt Ltd.

7 Signet Court, Swann's Road,
Cambridge, CB5 8LA, United Kingdom
Email: info@biorbyt.com, support@biorbyt.com
Phone: [+44 \(0\) 1223 859-353](tel:+44(0)1223859353) | Fax: [+1 \(415\) 651-8558](tel:+1(415)6518558)

Biorbyt LLC.

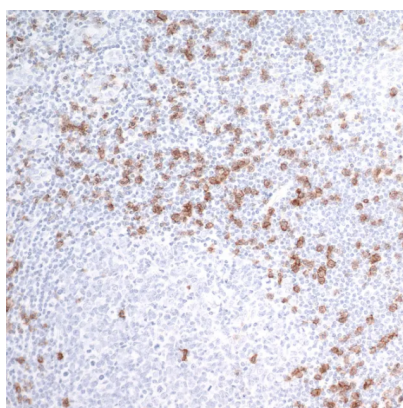
68 TW Alexander Drive,
Durham, NC, 27713, United States
Email: info@biorbyt.com, support@biorbyt.com
Phone: [+1 \(415\) 906-5211](tel:+1(415)9065211) | Fax: [+1 \(415\) 651-8558](tel:+1(415)6518558)

Uniprot ID**P01732****NCBI****NP_001759.3****Dilution Range**

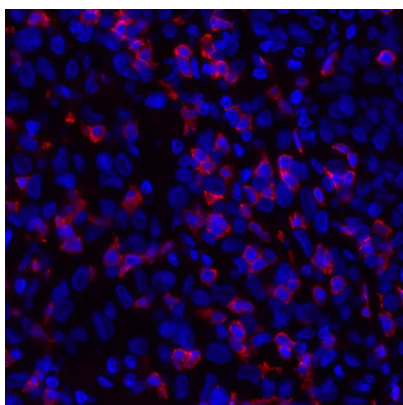
Flow-Cyt Fixed in 4% formaldehyde and permeabilized with 90% methanol. 0.5 μ l per 1×10^6 cells. Immunohistochemistry (IHC) 1:100 to 1:500. Epitope retrieval with citrate buffer pH6.0 is recommended for FFPE tissue sections. IHC-IF 1:100 to 1:500. Epitope retrieval with citrate buffer pH6.0 is recommended for FFPE cell sections. Multiplex Immunofluorescence (mIF) 1:250. Western Blot (WB) 1:1000

Expiration Date

12 months from date of receipt.



Detection of human CD8 alpha by immunohistochemistry. Sample: FFPE section of human tonsil. Antibody: Rabbit anti-CD8 alpha recombinant monoclonal antibody used at 1:250. Secondary: HRP-conjugated goat anti-rabbit IgG). Substrate: DAB



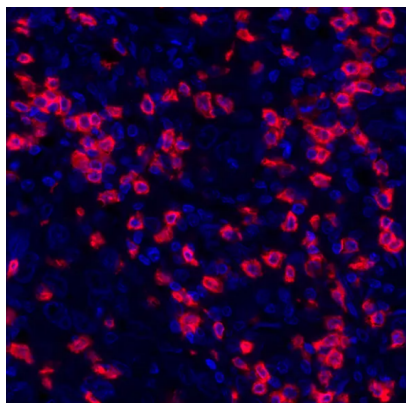
Detection of human CD8 alpha by immunohistochemistry. Sample: FFPE section of human melanoma. Antibody: Rabbit anti-CD8 alpha recombinant monoclonal antibody used at 1:100. Secondary: DyLight® 594-conjugated goat anti-rabbit IgG

Biorbyt Ltd.

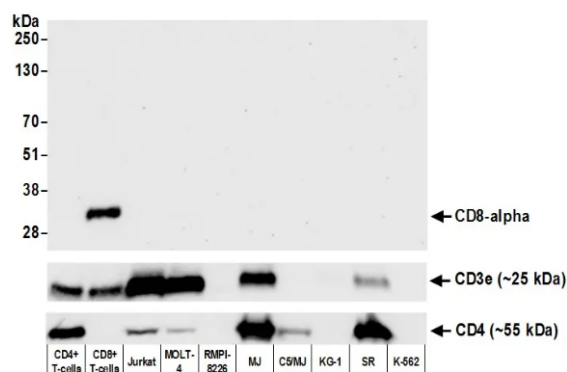
7 Signet Court, Swann's Road,
Cambridge, CB5 8LA, United Kingdom
Email: info@biorbyt.com, support@biorbyt.com
Phone: [+44 \(0\) 1223 859-353](tel:+44(0)1223859353) | Fax: [+1 \(415\) 651-8558](tel:+1(415)6518558)

Biorbyt LLC.

68 TW Alexander Drive,
Durham, NC, 27713, United States
Email: info@biorbyt.com, support@biorbyt.com
Phone: [+1 \(415\) 906-5211](tel:+1(415)9065211) | Fax: [+1 \(415\) 651-8558](tel:+1(415)6518558)



Detection of human CD8 alpha (red) by immunohistochemistry. Sample: FFPE section of human breast carcinoma. Antibody: Rabbit anti-CD8 alpha recombinant monoclonal antibody used at 1:250. Secondary: HRP-conjugated goat anti-rabbit IgG. Substrate: Opal™. Counterstain: DAPI (blue).



Detection of human CD8 alpha by western blot. Samples: Whole cell lysate (50 µg) from CD4+ T-cells, CD8+ T-cells, Jurkat, MOLT-4, RPMI-8226, MJ, C5/MJ, KG-1, SR, and K-562 cells prepared using NETN lysis buffer. Antibody: Rabbit anti-CD8 alpha recombinant monoclonal antibody used at 1:1000. Secondary: HRP-conjugated goat anti-rabbit IgG. Detection: Chemiluminescence with an exposure time of 30 seconds. Lower panel: Recombinant monoclonal antibodies to CD3e and CD4

Biorbyt Ltd.

7 Signet Court, Swann's Road,
Cambridge, CB5 8LA, United Kingdom
Email: info@biorbyt.com, support@biorbyt.com
Phone: [+44 \(0\) 1223 859-353](tel:+44(0)1223859353) | Fax: [+1 \(415\) 651-8558](tel:+1(415)6518558)

Biorbyt LLC.

68 TW Alexander Drive,
Durham, NC, 27713, United States
Email: info@biorbyt.com, support@biorbyt.com
Phone: [+1 \(415\) 906-5211](tel:+1(415)9065211) | Fax: [+1 \(415\) 651-8558](tel:+1(415)6518558)