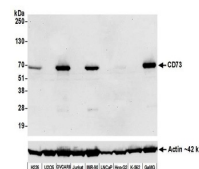


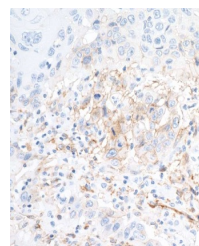
Product Datasheet

CD73 Antibody (orb1519864)

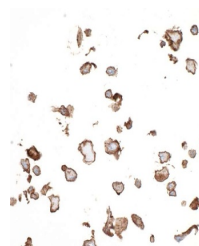
Description	CD73 Antibody
Species/Host	Rabbit
Reactivity	Human
Conjugation	Unconjugated
Tested Applications	ICC, IHC, WB
Immunogen	Residues 27-552 (ECD)
Target	CD73
Preservatives	Borate Buffered Saline (BBS) pH 8.2 with 0.1% rAlbumin and 0.09% Sodium Azide
Form/Appearance	Whole IgG
Concentration	100 µg/ml
Storage	2 - 8°C
Note	For research use only
Application notes	Format: Whole IgG
Clonality	Recombinant
Uniprot ID	P21589
NCBI	NP_002517.1
Dilution Range	WB - 1:1000; IHC - 1:100 to 1:500. Epitope retrieval with citrate buffer pH6.0 is recommended for FFPE tissue sections.; ICC - 1:100 to 1:500. Epitope retrieval with citrate buffer pH6.0 is recommended for FFPE cell sections.; IHC-IF - 1:100 to 1:500. Epitope retrieval with citrate buffer pH6.0 is recommended for FFPE tissue sections.
Expiration Date	12 months from date of receipt.



Detection of human CD73 by western blot...



Detection of human CD73 by immunohistochem...



Detection of human CD73 by immunocytoche...