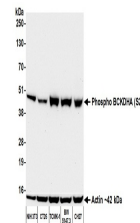


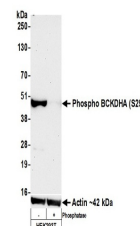
## Product Datasheet

# BCKDHA, Phospho (S292) Antibody (orb1519848)

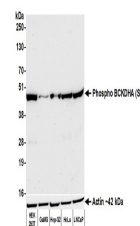
<b>Description</b>	BCKDHA, Phospho (S292) Antibody
<b>Species/Host</b>	Rabbit
<b>Reactivity</b>	Human, Mouse
<b>Conjugation</b>	Unconjugated
<b>Tested Applications</b>	SW-Size, WB
<b>Immunogen</b>	Surrounding serine 292
<b>Target</b>	BCKDHA, Phospho (S292)
<b>Preservatives</b>	Borate Buffered Saline (BBS) pH 8.2 with 0.1% rAlbumin and 0.09% Sodium Azide
<b>Form/Appearance</b>	Whole IgG
<b>Concentration</b>	40 µg/ml
<b>Storage</b>	2 - 8°C
<b>Note</b>	For research use only
<b>Application notes</b>	Format: Whole IgG
<b>Clonality</b>	Recombinant
<b>Uniprot ID</b>	<a href="#">P12694</a>
<b>NCBI</b>	<a href="#">NP_000700.1</a>
<b>Dilution Range</b>	WB - 1:1000
<b>Expiration Date</b>	12 months from date of receipt.



Detection of mouse Phospho BCKDHA (S292)...



Detection of human Phospho BCKDHA (S292)...



Detection of human Phospho BCKDHA (S292)...