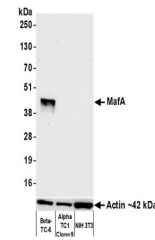


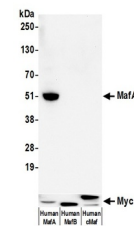
Product Datasheet

MafA Antibody (orb1519835)

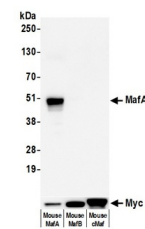
Description	MafA Antibody
Species/Host	Rabbit
Reactivity	Human, Mouse
Conjugation	Unconjugated
Tested Applications	ICC, IHC, WB
Immunogen	Between 125 and 175
Target	MafA
Preservatives	Borate Buffered Saline (BBS) pH 8.2 with 0.09% Sodium Azide, rAlbumin-Free
Form/Appearance	Whole IgG
Concentration	1000 µg/ml
Storage	2 - 8°C
Note	For research use only
Application notes	Format: Whole IgG
Clonality	Recombinant
Uniprot ID	Q8NHW3
NCBI	NP_963883.2
Dilution Range	WB - 1:1000; IHC - 1:100 to 1:500. Epitope retrieval with citrate buffer pH6.0 is recommended for FFPE tissue sections. Zinc-fixative (JB fix) is recommended to enhance staining.; ICC - 1:100 to 1:500. Epitope retrieval with citrate buffer pH6.0 is recommended for FFPE cell sections.; IHC-IF - 1:100 to 1:500. Epitope retrieval with citrate buffer pH6.0 is recommended for FFPE tissue sections. Zinc-fixative (JB fix) is recommended to enhance staining.
Expiration Date	12 months from date of receipt.



Detection of mouse MafA by western blot....



Detection of human MafA by western blot....



Detection of mouse MafA by western blot....