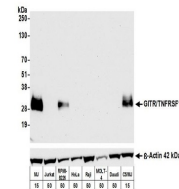


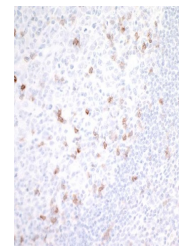
Product Datasheet

GITR/TNFRSF18 Antibody (orb1519832)

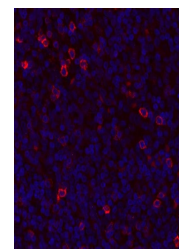
Description	GITR/TNFRSF18 Antibody
Species/Host	Rabbit
Reactivity	Human
Conjugation	Unconjugated
Tested Applications	FC, ICC, IHC, IP, WB
Immunogen	Between 191 and C-terminus
Target	GITR/TNFRSF18
Preservatives	Borate Buffered Saline (BBS) pH 8.2 with 0.09% Sodium Azide, rAlbumin-Free
Form/Appearance	Whole IgG
Concentration	1000 µg/ml
Storage	2 - 8°C
Note	For research use only
Application notes	Format: Whole IgG
Clonality	Recombinant
Uniprot ID	Q9Y5U5
NCBI	NP_004186.1
Dilution Range	WB - 1:1000; IP - 6 µl/1 mg lysate; IHC - 1:100 to 1:500. Epitope retrieval with citrate buffer pH6.0 is recommended for FFPE tissue sections.; ICC - 1:100 to 1:500. Epitope retrieval with citrate buffer pH6.0 is recommended for FFPE cell sections.; IHC-IF - 1:100 to 1:500. Epitope retrieval with citrate buffer pH6.0 is recommended for FFPE tissue sections.
Expiration Date	12 months from date of receipt.



Detection of human GITR/TNFRSF18 by west...



Detection of human GITR/TNFRSF18 by immu...



Detection of human GITR/TNFRSF18 by immu...