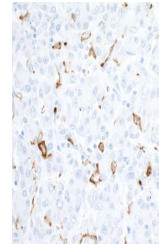


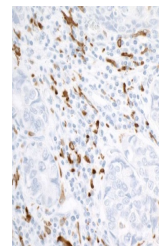
## Product Datasheet

### CD163 Antibody (orb1519782)

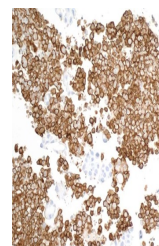
<b>Description</b>	CD163 Antibody
<b>Species/Host</b>	Rabbit
<b>Reactivity</b>	Human
<b>Conjugation</b>	Unconjugated
<b>Tested Applications</b>	IHC
<b>Immunogen</b>	Between 850 and 900
<b>Target</b>	CD163
<b>Preservatives</b>	Borate Buffered Saline (BBS) pH 8.2 with 0.1% rAlbumin and 0.09% Sodium Azide
<b>Form/Appearance</b>	Whole IgG
<b>Concentration</b>	250 µg/ml
<b>Storage</b>	2 - 8°C
<b>Note</b>	For research use only
<b>Application notes</b>	Format: Whole IgG
<b>Clonality</b>	Recombinant
<b>Uniprot ID</b>	<b>Q86VB7</b>
<b>NCBI</b>	<b>NP_004235.4</b>
<b>Dilution Range</b>	IHC - 1:100 to 1:500. Epitope retrieval with citrate buffer pH6.0 is recommended for FFPE tissue sections.
<b>Expiration Date</b>	12 months from date of receipt.



Detection of human CD163 in FFPE liver c...



Detection of human CD163 in FFPE lung ca...



Detection of human CD163 in FFPE lung ca...