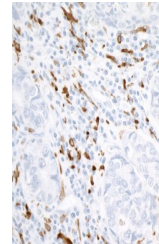


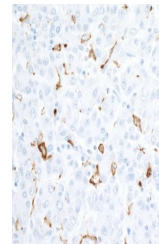
Product Datasheet

CD163 Antibody (orb1519780)

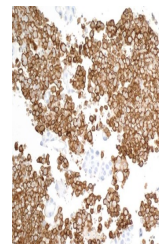
Description	CD163 Antibody
Species/Host	Rabbit
Reactivity	Human
Conjugation	Unconjugated
Tested Applications	IHC
Immunogen	Between 850 and 900
Target	CD163
Preservatives	Borate Buffered Saline (BBS) pH 8.2 with 0.1% rAlbumin and 0.09% Sodium Azide
Form/Appearance	Whole IgG
Concentration	250 µg/ml
Storage	2 - 8°C
Note	For research use only
Application notes	Format: Whole IgG
Clonality	Recombinant
Uniprot ID	Q86VB7
NCBI	NP_004235.4
Dilution Range	IHC - 1:100 to 1:500. Epitope retrieval with citrate buffer pH6.0 is recommended for FFPE tissue sections.
Expiration Date	12 months from date of receipt.



Detection of human CD163 in FFPE lung ca...



Detection of human CD163 in FFPE liver c...



Detection of human CD163 in FFPE lung ca...