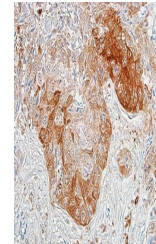


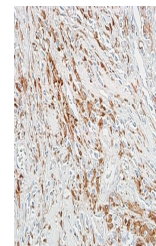
Product Datasheet

ALDH1A1 Antibody (orb1519774)

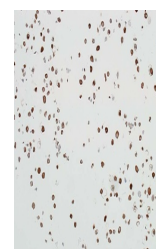
Description	ALDH1A1 Antibody
Species/Host	Rabbit
Reactivity	Human
Conjugation	Unconjugated
Tested Applications	ICC, IHC, IP, WB
Immunogen	Between 325 and 375
Target	ALDH1A1
Preservatives	Borate Buffered Saline (BBS) pH 8.2 with 0.1% rAlbumin and 0.09% Sodium Azide
Form/Appearance	Whole IgG
Concentration	500 µg/ml
Storage	2 - 8°C
Note	For research use only
Application notes	Format: Whole IgG
Clonality	Recombinant
Uniprot ID	P00352
NCBI	NP_000680.2
Dilution Range	WB - 1:1000; IP - 12 µl/1 mg lysate; IHC - 1:100 to 1:500. Epitope retrieval with citrate buffer pH6.0 is recommended for FFPE tissue sections.; ICC - 1:100 to 1:500. Epitope retrieval with citrate buffer pH6.0 is recommended for FFPE cell sections.
Expiration Date	12 months from date of receipt.



Detection of human ALDH1A1 in FFPE lung ...



Detection of human ALDH1A1 in FFPE breas...



Detection of human ALDH1A1 in FFPE NCI-H...