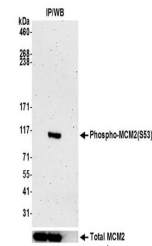


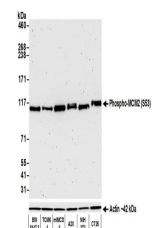
Product Datasheet

MCM2, Phospho (S53) Antibody (orb1519724)

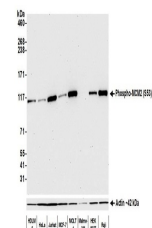
Description	MCM2, Phospho (S53) Antibody
Species/Host	Rabbit
Reactivity	Human, Mouse
Conjugation	Unconjugated
Tested Applications	ICC, IHC, WB
Immunogen	Surrounding Serine 53
Target	MCM2, Phospho (S53)
Preservatives	Borate Buffered Saline (BBS) pH 8.2 with 0.1% rAlbumin and 0.09% Sodium Azide
Form/Appearance	Whole IgG
Concentration	250 µg/ml
Storage	2 - 8°C
Note	For research use only
Application notes	Format: Whole IgG
Clonality	Recombinant
Uniprot ID	P49736
NCBI	NP_004517.2
Dilution Range	WB - 1:1,000; IHC - 1:100 to 1:500. Epitope retrieval with citrate buffer pH6.0 is recommended for FFPE tissue sections.; ICC - 1:100 to 1:500. Epitope retrieval with citrate buffer pH6.0 is recommended for FFPE cell sections.
Expiration Date	12 months from date of receipt.



Detection of human Phospho-MCM2 (S53) by...



Detection of mouse Phospho-MCM2 (S53) by...



Detection of human Phospho-MCM2 (S53) by...