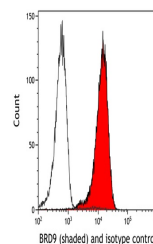


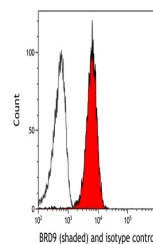
Product Datasheet

BRD9 Antibody (orb1519614)

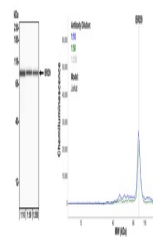
Description	BRD9 Antibody
Species/Host	Rabbit
Reactivity	Human, Mouse
Conjugation	Unconjugated
Tested Applications	FC, ICC, IHC, IP, SW-Size, WB
Immunogen	Between 547 and C-terminus
Target	BRD9
Preservatives	Borate Buffered Saline (BBS) pH 8.2 with 0.09% Sodium Azide, rAlbumin-Free
Form/Appearance	Whole IgG
Concentration	1000 µg/ml
Storage	2 - 8°C
Note	For research use only
Application notes	Format: Whole IgG
Clonality	Recombinant
Uniprot ID	Q9H8M2
NCBI	NP_076413.3
Dilution Range	WB - 1:1000; IP - 6 µl/1 mg lysate; IHC - 1:100 to 1:500. Epitope retrieval with citrate buffer pH6.0 is recommended for FFPE tissue sections.; ICC - 1:100 to 1:500. Epitope retrieval with citrate buffer pH6.0 is recommended for FFPE cell sections.
Expiration Date	12 months from date of receipt.



Detection of human BRD9 (shaded) in HDLM...



Detection of mouse BRD9 (shaded) in NIH3...



Detection of human BRD9 by Simple Wester...